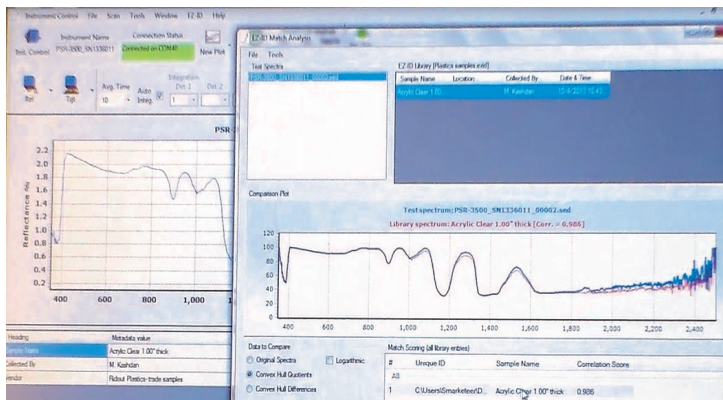


# SPECTRAL EVOLUTION

## EZ-ID Sample Identification and Custom Library Builder

### Quickly Identify Your Target Sample with EZ-ID™ Software & Our Spectroradiometers & Spectrometers

*Compare Against the USGS Spectral Library, other Commercial Libraries or Create Your Own Custom Library*



Sample identification has never been faster, easier, or more accurate than with EZ-ID software from SPECTRAL EVOLUTION. EZ-ID provides sample identification capabilities built into SPECTRAL EVOLUTION'S field portable spectrometers and spectroradiometers for applications ranging from vegetation studies, to soil research, crop health, raw materials and plastics ID, minerals, and more.

EZ-ID allows you to compare your target scans with the USGS spectral library, other commercially available libraries, or your in-house custom library. You can also create custom libraries using the EZ-ID Library Builder module for canopies, crops, or plastics with information like location, researcher, manufacturer, vendor, or lot number — all critical metadata can be defined and linked to your spectral library and target scans.

EZ-ID software can be used on unknown samples in the field or in a lab. EZ-ID features include:

- ◆ Fast and accurate identification of unknown target sample to known library sample
- ◆ Easy-to-use—just collect your scan using a SPECTRAL EVOLUTION spectrometer or spectroradiometer and see results in real time
- ◆ Simple, consistent user-interface
- ◆ Software provides a weighted score for best matches
- ◆ Include or exclude spectral regions of interest for optimal results

EZ-ID is a trademarks of SPECTRAL EVOLUTION. SpecMIN is a trademark of Spectral International, Inc.

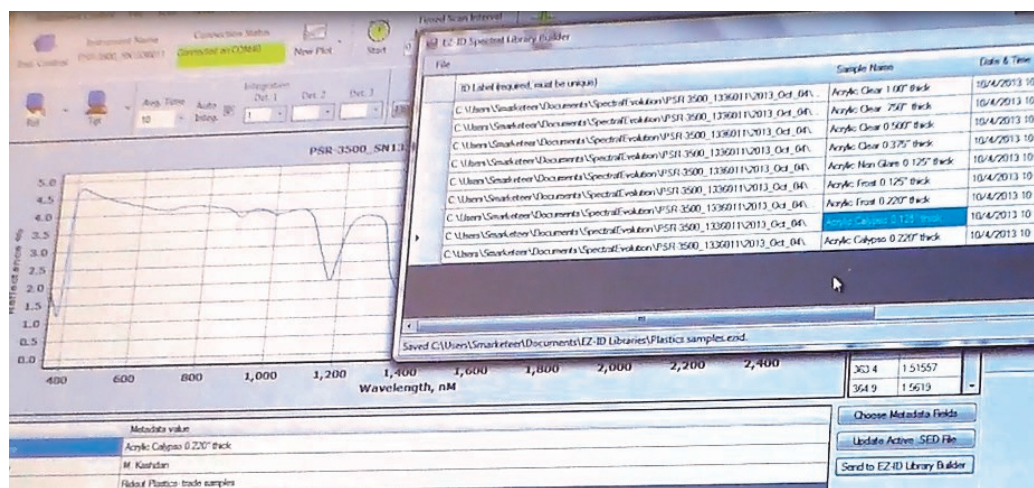


1 Canal Street ♦ Unit B1  
Lawrence, MA 01840 USA  
Tel: 978 687-1833 ♦ Fax: 978 945-0372  
Email: [sales@spectralevolution.com](mailto:sales@spectralevolution.com)  
[www.spectralevolution.com](http://www.spectralevolution.com)

# SPECTRAL EVOLUTION

## EZ-ID Sample Identification and Custom Library Builder

### Quickly Build/Add To a Custom Library



Create your own custom library for vegetation, soil, crops, raw materials, plastics, powders — quickly and easily with the SPECTRAL EVOLUTION Library Builder.

- ◆ Scan your sample with a SPECTRAL EVOLUTION spectrometer or spectroradiometer
- ◆ Select the appropriate metadata associated with this scan, including user-defined metadata fields
- ◆ Enter values/descriptions associated with the metadata (sample name, location, vendor, operator) quickly and easily to the library you select—commercial or custom
- ◆ Load your library and run your new target scans against the library for a fast identification

With our EZ-ID Library Builder module, users have the ability to collect the best scans in the least amount of time, quickly identify those scans, save them, and add them to the existing library, or build a new library.

With SPECTRAL EVOLUTION spectrometers and spectroradiometers, you have a complete sample identification system for use in the field or in the laboratory that will allow you to create and expand your own spectral libraries for your research projects.



1 Canal Street ♦ Unit B1  
Lawrence, MA 01840 USA  
Tel: 978 687-1833 ♦ Fax: 978 945-0372  
Email: [sales@spectralevolution.com](mailto:sales@spectralevolution.com)  
[www.spectralevolution.com](http://www.spectralevolution.com)